

APPROXIMATE LOCATION OF SITE  
FIRE INDICATOR PANEL AND  
EMERGENCY CONTROL PANEL.

REFER TO DRAWING [LCE14462-F200](#)  
FOR CONTINUATION.

TOWNHOUSE FIRE SERVICES DESIGN:  
• ALLOW FOR DEDICATED 50W AMPLIFIER AND  
OCCUPANT WARNING CIRCUIT FOR THE  
TOWNHOUSES IN THE SITE FIP.  
• ALLOW FOR MINIMUM 2 EMERGENCY  
EVACUATION SPEAKERS WITHIN EACH  
TOWNHOUSE TO ACHIEVE 75DB(A) AT  
BEDHEADS.  
• SPEAKERS ACTIVATE UPON CARPARK  
SPRINKLER ALARM.  
• TOWNHOUSES TO BE PROVIDED WITH SMOKE  
ALARMS (INTERCONNECTED WITHIN EACH  
TOWNHOUSE)

REFER TO FIRE ENGINEERING REPORT FOR FINAL  
FIRE SERVICES REQUIREMENTS WITHIN  
TOWNHOUSES.

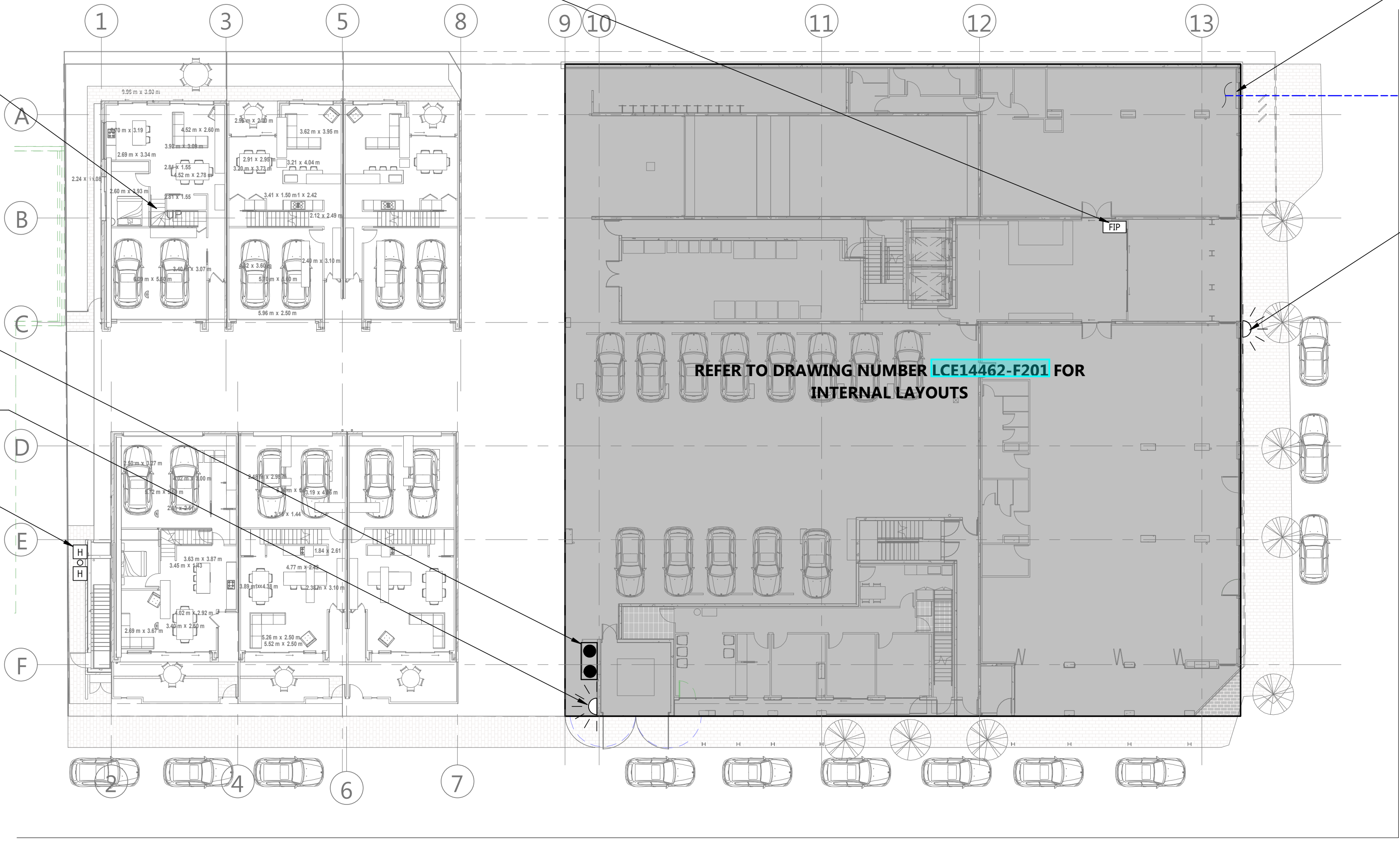
SITE SAMFS BRIGADE BOOSTER ASSEMBLY  
CONSISTING OF:  
• 1500 QUAD FEED HYDRANT  
• 1500 QUAD BOOSTER (COMBINED FIRE  
HYDRANT AND SPRINKLER SYSTEM)  
REFER TO DRAWING [LCE14462-F300](#) FOR DETAIL.

PROVIDE EXTERNAL STROBE TO INDICATE PUMP  
RUN.

PROVIDE NEW DOUBLE HEADED EXTERNAL  
ATTACK HYDRANT. PROVIDE WEATHERPROOF  
SIGNAGE ADJACENT STATING 'ATTACK  
HYDRANT CONNECTED TO PUMPED AND  
BOOSTED BUILDING SUPPLY' IN  
ACCORDANCE WITH THE REQUIREMENTS OF  
THE FIRE ENGINEERING REPORT.

CONTRACTOR TO MAKE  
APPLICATION AND PAY ASSOCIATED  
FEES TO 'SA WATER CORPORATION  
FOR THE PROVISION OF A NEW Ø150  
FIRE CONNECTION.

INSTALL EXTERNAL 'FIRE' STROBE ON THE  
BUILDING FACADE FACING UNLEY ROAD.  
FIRE SERVICES CONTRACTOR TO PROVIDE  
ALL ASSOCIATED CABLING AND COMPLETE  
FINAL CONNECTION TO FDCIE.  
COORDINATE FINAL LOCATION OF STROBE  
WITH ARCHITECT.



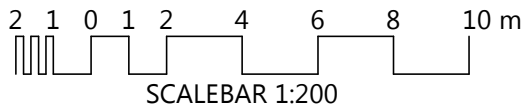
OPEY AVENUE

UNLEY ROAD

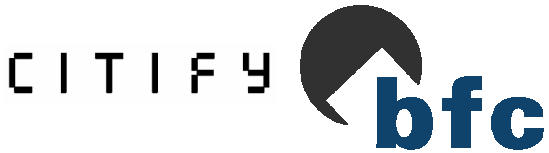
REV	DESCRIPTION	DATE	CHKD
B	CONSTRUCTION ISSUE	24.03.2020	-
A	CONSTRUCTION ISSUE	14.02.2020	-

© Copyright Lucid Consulting Australia 3/24/2020 2:31:27 PM

FOR CONSTRUCTION

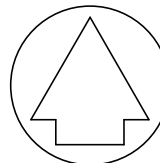


**TO BE PRINTED IN COLOUR**  
THE PURPOSE OF THIS DOCUMENT IS INTENDED TO  
BE VIEWED OR PRINTED IN COLOUR FOR THE FULL  
EXTENT OF THE SCOPE OF WORKS TO BE SHOWN.



**LUCID**  
CONSULTING AUSTRALIA  
Level 3/169, Pirie St Adelaide SA 5000  
Phone: (08) 8407 9700  
Email: [adelaide@lucidconsulting.com.au](mailto:adelaide@lucidconsulting.com.au)

PROJECT  
HYDE PARK PLACE  
248 UNLEY ROAD, HYDE PARK  
FIRE SERVICES  
DRAWING  
SITE PLAN



NOT FOR CONSTRUCTION PURPOSES UNLESS STAMPED FOR  
CONSTRUCTION. VERIFY DIMENSIONS AND LEVELS ON SITE  
BEFORE SETTING OUT. DO NOT SCALE. REFER TO FIGURED  
DIMENSIONS - IN mm UNLESS OTHERWISE STATED.

Scale	Design: LM/AR	No. in Set	Date
1 : 200	Drawn: SHA	3 of 14	MAR 2020
Review: -			

Orig. Size	Drawing no.	Revision
A1	LCE14462-F100	B